

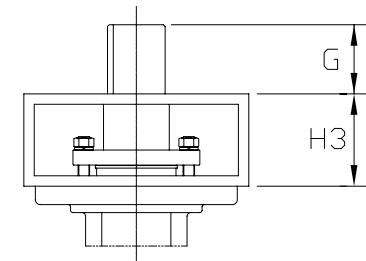
### PARTS SCHEDULE

ITEM NO.	NAME	MATERIAL	NO. REQ'D
1	BODY		1
2	SEAT RING		1
3	DISC		1
4	STEM		1
5	RETAINER RING		1
6	PACKING		1 SET
7	PACKING GLAND		1
8	GLAND FLANGE		1
9	GLAND BOLT		2
10	NUT		2
11	SPRING WASHER		2
12	BUSH BEARING		2
13	DISC PIN		2
14	PACKING RETAINER		1
15	CAP PACKING		1
16	CAP		1
17	CAP BOLT		4
18	SPRING WASHER		4
19	SEAT RETAINER		1
20	RETAINER BOLT		4

### DIMENSIONS

VALVE SIZE		FLANGE DIMENSION									MOUNTING BASE					
INCH	MM	ØA	C	C1	D	F	G	H3	ØH	K	B.C. 1	n	øh1	B.C. 2	n	øh2
26	650	23.46	22.44	20.79	6.50	11.42	4.02	-	2.56	.75x.50 KEY	31.75	4	1 1/4-8 UNC	10.0	8	.75
28	700	25.51	23.62	21.85	6.50	11.42	4.02	-	2.56	.75x.50 KEY	34.00	4	1 1/4-8 UNC	10.0	8	.75
30	750	27.32	25.39	23.03	7.48	12.99	4.45	-	3.15	.87x.55 KEY	36.00	4	1 1/4-8 UNC	10.0	8	.75
32	800	29.33	26.38	24.21	7.48	12.99	4.45	-	3.15	.87x.55 KEY	38.50	4	1 1/2-8 UNC	10.0	8	.75
34	850	31.93	27.56	26.18	7.99	12.99	4.45	-	3.15	.87x.55 KEY	40.50	4	1 1/2-8 UNC	10.0	8	.75
36	900	33.03	28.74	26.38	7.99	12.99	4.45	-	3.15	.87x.55 KEY	42.75	4	1 1/2-8 UNC	10.0	8	.75
38	950															
40	1000	37.32	30.12	30.12	8.50	-	4.72	5.91	3.15	1.10x.55 KEY	47.25	4	1 1/2-8 UNC	10.0	8	.75
42	1050	39.45	30.71	31.10	9.49	-	4.72	6.30	3.15	1.10x.55 KEY	49.50	8	1 1/2-8 UNC	11.73	8	.91
44	1100															
46	1150															
48	1200	45.20	34.65	35.43	10.0	-	4.72	6.30	3.94	1.10x.63 KEY	56.00	8	1 1/2-8 UNC	11.54	8	.91

40" & larger requires gland bracket



### ABZ Valves & Controls

HIGH PERFORMANCE  
26"-48" FIGURE 401 VALVE  
DOUBLE OFFSET  
CLASS 150 MSS STYLE  
STANDARD WAFER PATTERN  
DIMENSIONS SUBJECT TO  
CHANGE WITHOUT NOTICE

