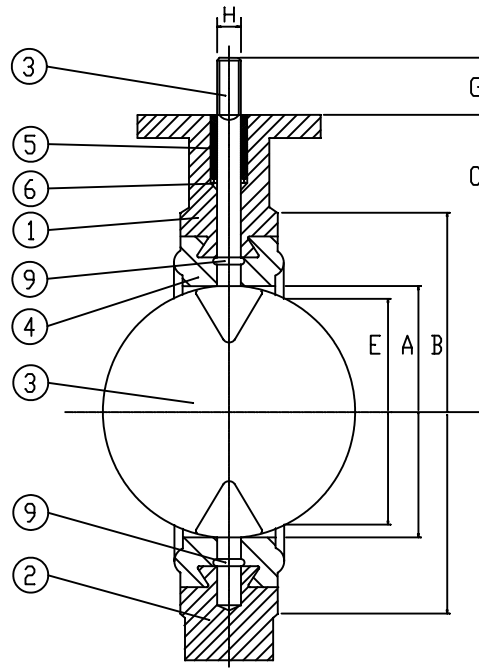
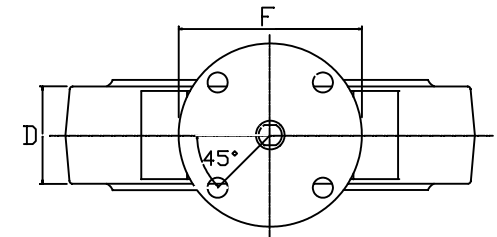
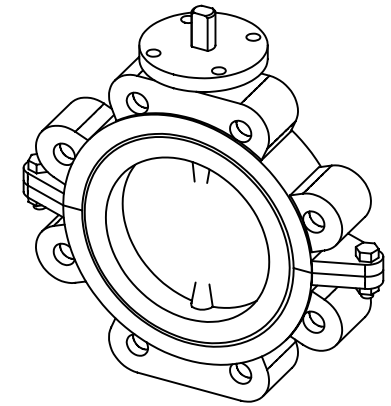


FLOW VIEW



SECTION



TOP VIEW

NOTES:
The figure 919 can not be used on a pipe or flange with an inside diameter less than the "E" dimension.

API Standard 609

VALVE DIMENSIONS

Size	A	B	C	D	E	F	G	H	K	Keyway	Weight	Top Plate Drilling			Tapped Lug Data		
												Bolt Circle	No. of Holes	Hole Dia.	Bolt Circle	No. of Holes	Tap
2"	2	4 1/8	3 15/16	1 5/8	1 3/8	4	1 1/4	9/16	3/8	-	8	3 1/4	4	7/16	4 3/4	4	5/8-11 UNC
2.5"	2 1/2	4 3/16	4 1/2	1 3/4	2 1/16	4	1 1/4	9/16	3/8	-	9	3 1/4	4	7/16	5 1/2	4	5/8-11 UNC
3"	3	5 3/8	4 7/8	1 3/4	2 9/16	4	1 1/4	9/16	3/8	-	11	3 1/4	4	7/16	6	4	5/8-11 UNC
4"	4	6 3/4	6	2	3 5/8	4	1 1/4	5/8	7/16	-	17	3 1/4	4	7/16	7 1/2	8	5/8-11 UNC
5"	5	7 3/4	6	2 1/8	4 3/4	4	1 1/4	3/4	1/2	-	21	3 1/4	4	7/16	8 1/2	8	3/4-10 UNC
6"	5 3/4	8 3/4	6 1/2	2 1/8	5 1/2	4	1 1/4	3/4	1/2	-	26	3 1/4	4	7/16	9 1/2	8	3/4-10 UNC
8"	7 3/4	10 7/8	8 5/16	2 1/2	7 1/2	6	1 1/4	7/8	5/8	-	42	5	4	9/16	11 3/4	8	3/4-10 UNC
10"	9 3/4	13 1/4	9	2 1/2	9 19/32	6	2	1 1/8	-	1/4x1/8	65	5	4	9/16	14 1/4	12	7/8-9 UNC
12"	11 3/4	16 1/16	23/32	3	11 9/16	6	2	1 1/8	-	1/4x1/8	108	5	4	9/16	17	12	7/8-9 UNC

Item No.	Name	No. Req'd	Material	Remarks
1	Top Body	1		
2	Bottom Body	1		
3	Disc-Stem	1		
4	Seat	1		
5	Bushing	1		
6	Seal	2		
7	Side Bolts	2		
8	Key	1		
9	O-Ring	2		

SUBASSEMBLY PART NUMBER				
Trim	Part	Size	Figure No.	Style
ABZ MANUFACTURING, INC. 2"-12" Figure 919 Valve Standard Lug Pattern				
BODY: Split & Tapped Lug w/360° Top Plate DISC: Stem-Disc Assembly w/ Flats/Keyway SEAT: Elastomer				
BY DATE	DESCRIPTION	DATE: 07-02-04		