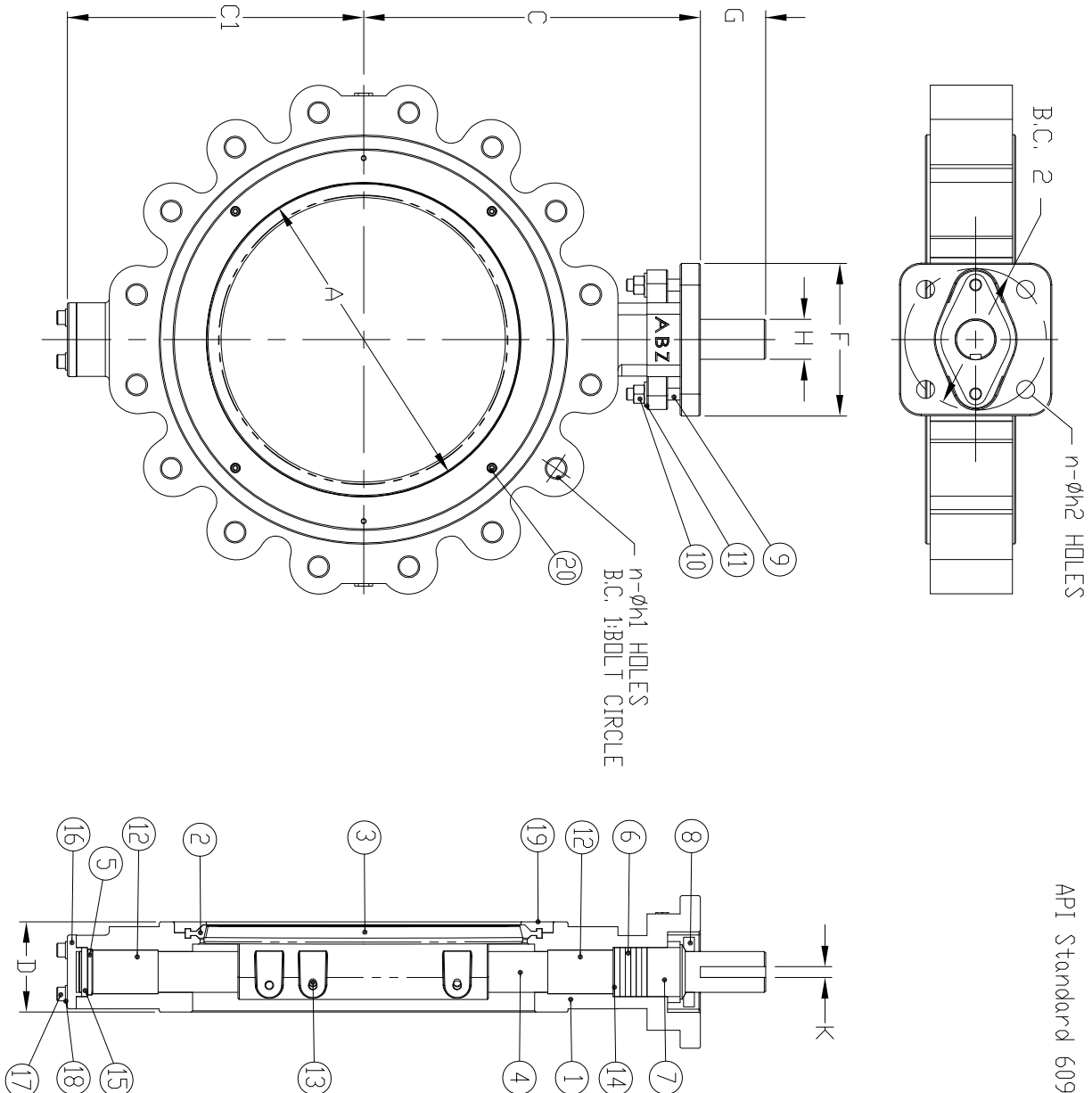


API Standard 609

PARTS SCHEDULE

ITEM NO.	NAME	MATERIAL	QTY	NO. RECD
1	BODY		1	
2	SEAT RING		1	
3	DISC		1	
4	STEM		1	
5	RETAINER RING		1	
6	PACKING		1 SET	
7	PACKING GLAND		1	
8	GLAND FLANGE		1	
9	GLAND BOLT		2	
10	NUT		2	
11	SPRING WASHER		2	
12	BUSH BEARING		2	
13	DISC PIN		2	
14	PACKING RETAINER		1	
15	CAP PACKING		1	
16	CAP		1	
17	CAP BOLT		4	
18	SPRING WASHER		4	
19	SEAT RETAINER		1	
20	RETAINER BOLT		4	



DIMENSIONS

VALVE SIZE	FLANGE DIMENSION										MOUNTING BASE				
	INCH	MM	ØA	C	C1	D	F	G	ØH	K	B.C. 1	n	Øh1	B.C. 2	n
14	350	12,48	13,19	11,81	3,62	5,98	2,24	1,375	.313 KEY .50	18,75	12	1-8 UNC	5,00	4	.550
16	400	14,13	15,47	13,39	4,02	8,03	3,00	1,875	.50 KEY .50	21,25	16	1-8 UNC	6,50	4	.830
18	450	16,38	16,81	14,76	4,49	8,03	3,00	1,875	.50 KEY .50	22,75	16	1 1/8-8 UNC	6,50	4	.830
20	500	18,39	17,72	15,75	5,00	8,03	3,00	2,122	.50 KEY .75x.50	25,00	20	1 1/8-8 UNC	6,50	4	.830
24	600	21,57	20,87	18,70	6,06	11,42	4,02	2,555		29,50	20	1 1/4-8 UNC	10,00	8	.750

ABZ Valves & Controls

HIGH PERFORMANCE  
14"-24" FIGURE 402 VALVE  
DOUBLE OFFSET  
CLASS 150  
STANDARD LUGGED PATTERN  
DIMENSIONS SUBJECT TO  
CHANGE WITHOUT NOTICE

DATE: 05-31-07

REV: 2

DRAWING NO. 14-24 150 FIG 402

