

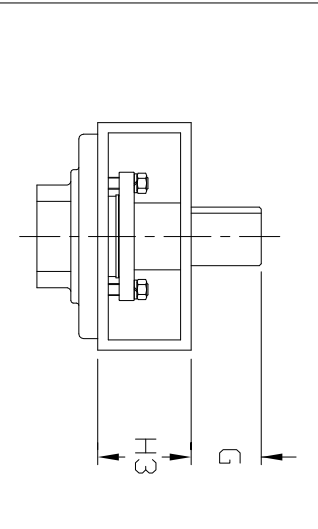
DIMENSIONS

VALVE SIZE INCH	MM	φA	C	C1	D	F	G	H3	φH	K	FLANGE DIMENSION			MOUNTING BASE		
											B.C. 1	n	φh1	B.C. 2	n	φh2
26	650	23.70	24.80	22.05	8.27	12.99	4.45	-	3.145	87x55 KEY	34.50	4	1 5/8-8 UNC	100	8	.75
28	700															
30	750	27.40	25.59	25.98	9.06	-	4.72	6.30	3.933	110x63 KEY	39.25	4	1 3/4-8 UNC	11.73	8	.91
32	800															
34	850															
36	900	33.15	29.92	29.72	10.75	-	5.31	6.30	4.719	126x71 KEY	46.00	8	2-8 UNC	11.73	8	.91
38	950															
40	1000	36.77	30.71	29.84	11.81	-	5.31	6.69	4.719	126x71 KEY	45.50	8	1 5/8-8 UNC	14.02	8	1.30
42	1050															
44	1100															
46	1150															
48	1200															

PARTS SCHEDULE

ITEM NO.	NAME	MATERIAL	NO. REQ'D.
1	BODY		1
2	SEAT RING		1
3	DISC		1
4	STEM		1
5	RETAINER RING		1
6	PACKING		1 SET
7	PACKING GLAND		1
8	GLAND FLANGE		1
9	GLAND BOLT		2
10	NUT		2
11	SPRING WASHER		2
12	BUSH BEARING		2
13	DISC PIN		2
14	PACKING RETAINER		1
15	CAP PACKING		1
16	CAP		1
17	CAP BOLT		4
18	SPRING WASHER		4
19	SEAT RETAINER		1
20	RETAINER BOLT		4

30" & larger requires gland bracket



ABZ Valves & Controls

HIGH PERFORMANCE  
26"-48" FIGURE 421 VALVE  
DOUBLE OFFSET  
CLASS 300 MSS VERSION  
STANDARD WAFER PATTERN  
DIMENSIONS SUBJECT TO  
CHANGE WITHOUT NOTICE

DATE: 06-07-07 REV:2 DRAWING NO. 26-48 300 FIG. 421 MSS

