

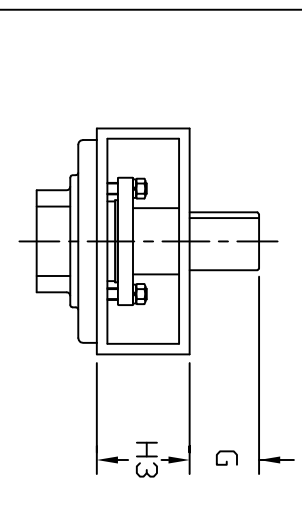
**DIMENSIONS**

VALVE SIZE	INCH	MM	øA	C	C1	D	F	G	H3	øH	K	FLANGE DIMENSION			MOUNTING BASE		
												B.C. 1	n	øh1	B.C. 2	n	øh2
26	650	23.70	23.03	20.67	8.27	12.99	4.45	-	3.146	ø7x.55 KEY	31.62	32	1 1/4-8 UNC	10.0	8	.75	
28	700									1.10x.63 KEY	36.25	36	1 3/8-8 UNC	11.73	8	.91	
30	750	27.40	24.02	23.62	9.06	-	4.72	-	6.30	1.26x.71 KEY							
32	800																
34	850																
36	900	33.15	29.53	27.95	10.75	-	5.31	-	6.30	1.26x.71 KEY	42.88	32	1 5/8-8 UNC	11.73	8	.91	
38	950																
40	1000	36.77	32.28	31.02	11.81	-	5.31	-	6.69	1.26x.71 KEY	46.88	40	1 5/8-8 UNC	14.02	8	1.30	
42	1050	38.58	37.80	37.01	11.81	-	7.09	-	6.69	1.42x.79 KEY	49.00	36	1 3/4-8 UNC	14.02	8	1.30	
44	1100																
46	1150																
48	1200																

**PARTS SCHEDULE**

ITEM NO.	NAME	MATERIAL	QTY	NO. REQ'D
1	BODY		1	1
2	SEAT RING		1	1
3	DISC		1	1
4	STEM		1	1
5	RETAINER RING		1	1
6	PACKING		1 SET	1
7	PACKING GLAND		1	1
8	GLAND FLANGE		1	1
9	GLAND BOLT		2	2
10	NUT		2	2
11	SPRING WASHER		2	2
12	BUSH BEARING		2	2
13	DISC PIN		2	2
14	PACKING RETAINER		1	1
15	CAP PACKING		1	1
16	CAP		1	1
17	CAP BOLT		4	4
18	SPRING WASHER		4	4
19	SEAT RETAINER		1	1
20	RETAINER BOLT		4	4

*30" & larger requires gland bracket*



**ABZ Valves & Controls**

HIGH PERFORMANCE  
26"-48" FIGURE 422 VALVE  
DOUBLE OFFSET  
CLASS 300 API VERSION  
STANDARD LUGGED PATTERN  
DIMENSIONS SUBJECT TO  
CHANGE WITHOUT NOTICE

